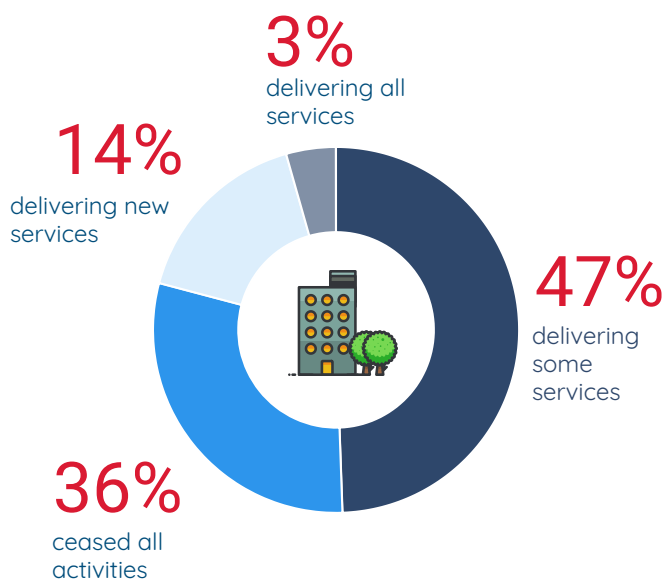
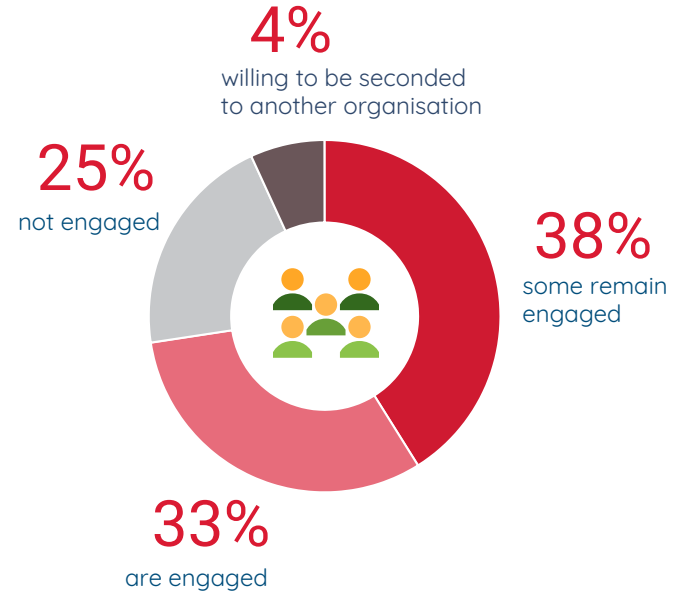


Volunteer Management During COVID-19

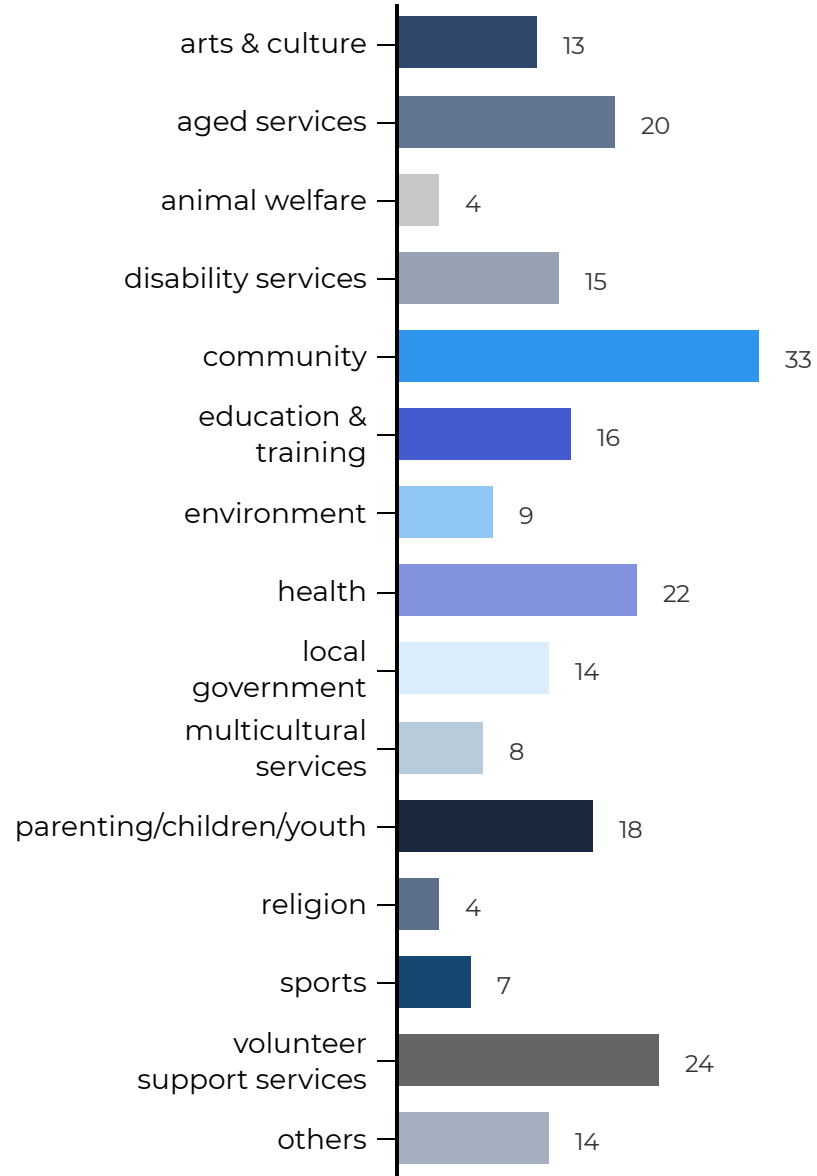
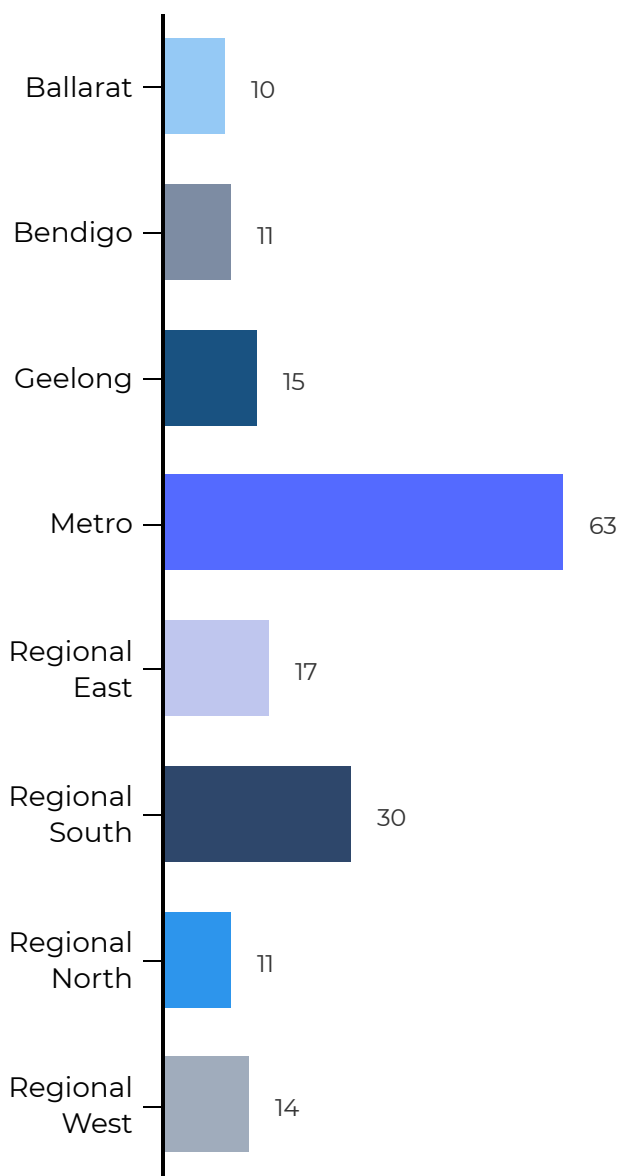
How have organisations been impacted?



How have volunteers been impacted?



Organisations Surveyed



Most Pressing Issues for Volunteer Managers

1 STAYING CONNECTED
one third of the organisations were concerned that their volunteers would not return once the pandemic is over

2 HIGH RISK CATEGORIES
15 respondents had challenges with their volunteer workforce themselves being high risk categories

3 ADAPTION TO ONLINE & REMOTE VOLUNTEERING
13 respondents had issues related to adapting to online volunteering. This included issues with changing systems and also retraining volunteers

4 GENERAL SAFETY/WELL - BEING
organisations with active programs face a new challenge - health and safety of their volunteers and potential exposure of their volunteers

5 LOSS OF RESOURCES
ceased programs have impacted funding, organisational resources and capacity to deliver services

6 LOSS OF VOLUNTEER HOURS
organisations are concerned about losing their volunteers since many programs have stopped delivering